

Do the following steps to Re-programme the Logger

Previous:

1, For first time use or after battery replacement: connect the data logger to the computer via USB Port, configure the settings via software.

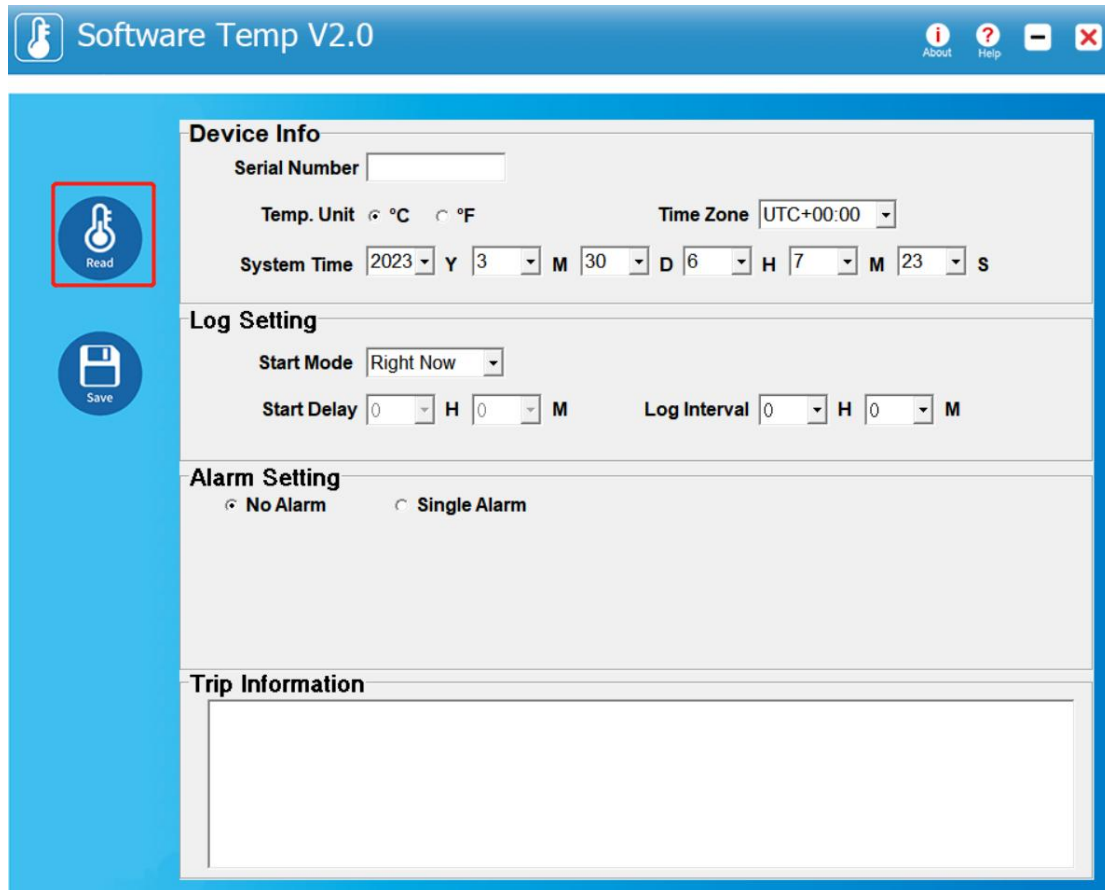
If use default setting of the logger, no need to reprogramme the logger for first time using)

2, First Plug into the logger and then start the software.

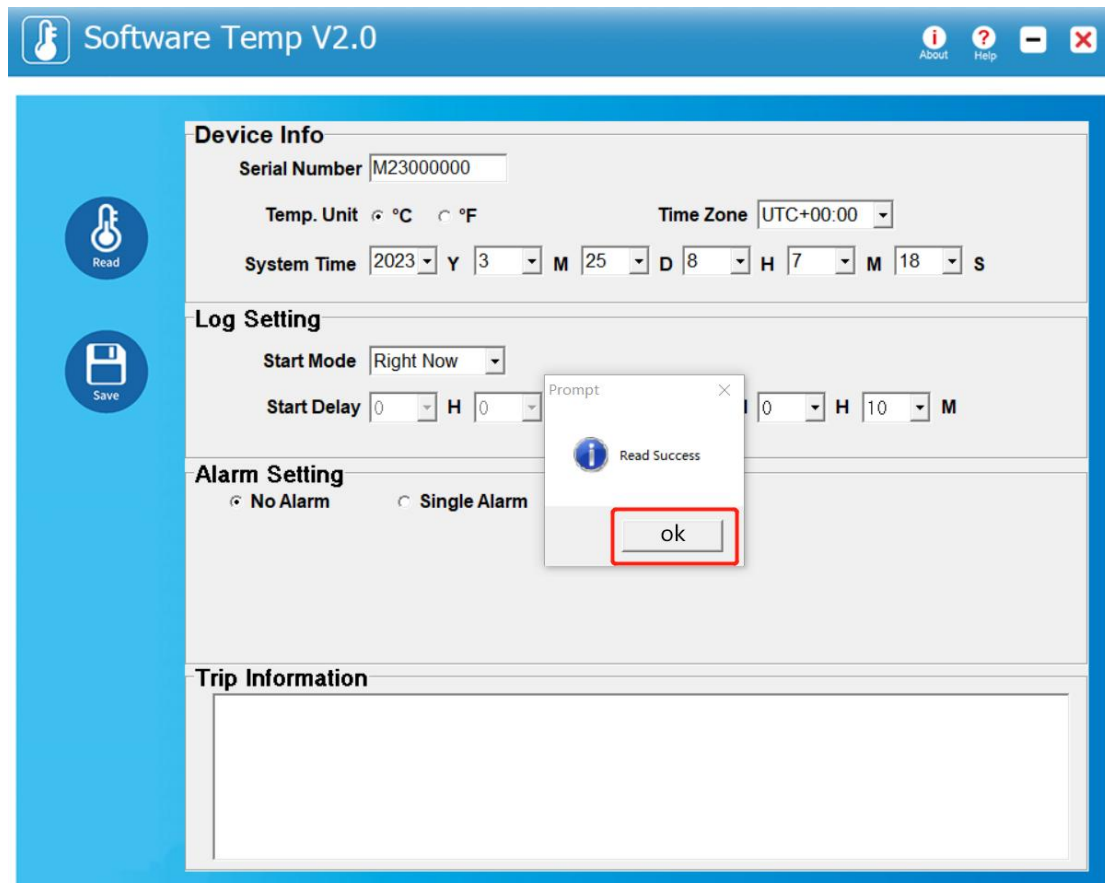
Install the reprogram software Temp V2.0.

1, Plug Logger into USB port of computer, the Green Led will be on and then the Red led of the logger will start blinking.

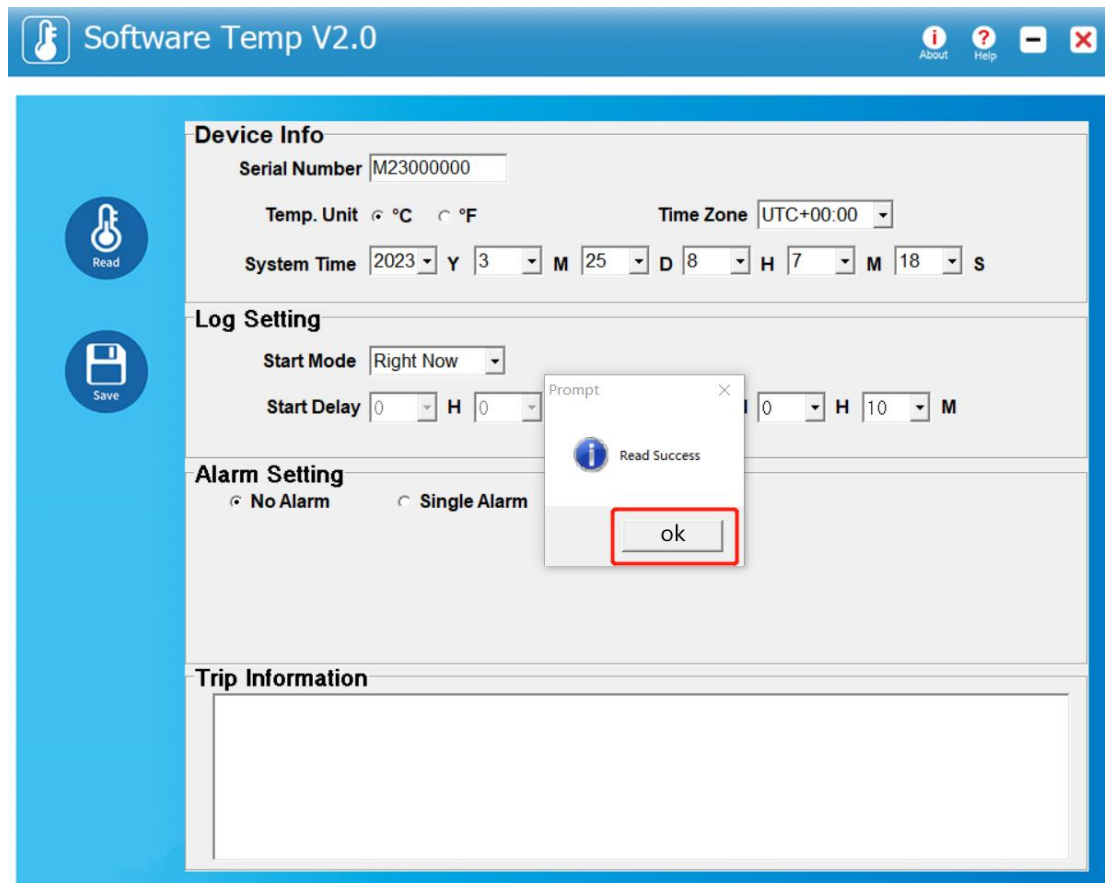
2, Running the software, please click **Read** when the red LED start blinking.



3, Then the software will show **read success** and default setting of the logger. (Please do not input the serial number to the Serial Number column in software to configure, only follow click **Read- Read success** process,because only this way will built the communication of software and logger successfully)



4, click “ok” like below,



5, Then you can change the Log interval, Start Delay (Change the Start mode to Delayed), Time Zone and add Trip information freely.

Software Temp V2.0

Read

Save

Device Info

Serial Number M23000003

Temp. Unit ☒ °C ☐ °F

Time Zone UTC+00:00

System Time 2023 Y 3 M 27 D 6 H 43 M 30 S

Log Setting

Start Mode Delayed

Start Delay 0 H 30 M

Log Interval 0 H 10 M


Alarm Setting


☒ No Alarm ☐ Single Alarm

Trip Information

6, If you don't need alarm, you can directly choose No Alarm, if you need alarm setting, you can choose Single alarm, See below,

Software Temp/Hum V2.0

Read

Save

Device Info

Serial Number

Temp. Unit ☒ °C ☐ °F

Time Zone

System Time Y M D H M S

Log Setting

Start Mode

Start Delay H M

Log Interval H M

Alarm Setting

☒ No Alarm ☐ Single Alarm

Trip Information

For No alarm, see below picture,

Software Temp V2.0

Read

Save

Device Info

Serial Number

Temp. Unit ☒ °C ☐ °F

Time Zone

System Time Y M D H M S

Log Setting

Start Mode

Start Delay H M

Log Interval H M

Alarm Setting

☒ No Alarm ☐ Single Alarm

Trip Information

For Single alarm, You can set temperature Like 2°C for lower limits and 8°C for higher limit freely , see below picture,

Software Temp V2.0

Read

Save

Device Info

Serial Number M23000003

Temp. Unit ☒ °C ☐ °F

Time Zone UTC+00:00

System Time 2023 Y 3 M 29 D 8 H 47 M 43 S

Log Setting

Start Mode Delayed

Start Delay 0 H 30 M

Log Interval 0 H 10 M

Alarm Setting

☐ No Alarm ☒ Single Alarm

Temperature H1:Over 8 °C

Temperature L1:Below 2 °C

Trip Information

From shen zhen to France DHL 666888999!

7,After all the setting finished, click **Save** to save all the settings.

Software Temp V2.0

Read

Save

Device Info

Serial Number M23000003

Temp. Unit ☒ °C ☐ °F

Time Zone UTC+00:00

System Time 2023 Y 3 M 29 D 8 H 48 M 59 S

Log Setting

Start Mode Delayed

Start Delay 0 H 30 M

Log Interval 0 H 10 M

Alarm Setting

☐ No Alarm ☒ Single Alarm

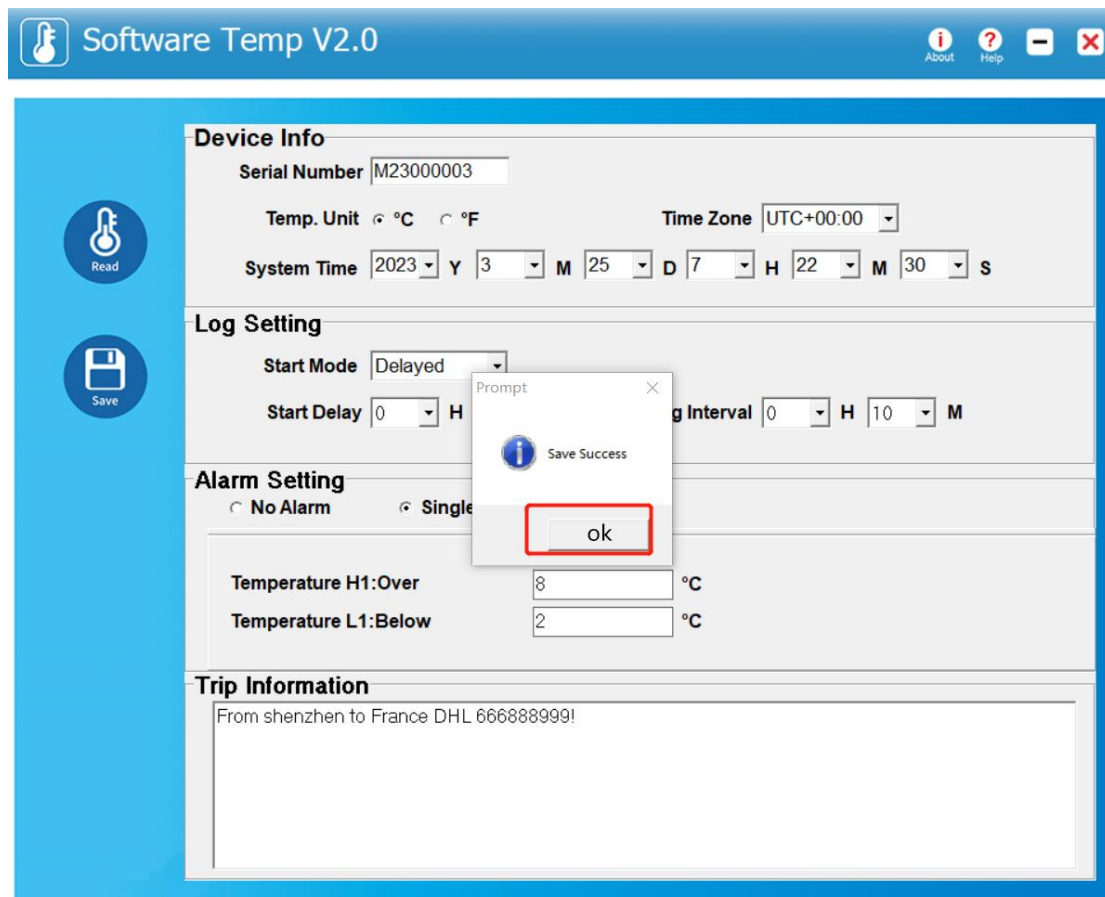
Temperature H1:Over 8 °C

Temperature L1:Below 2 °C

Trip Information

From shen zhen to France DHL 666888999!

8,Then the software will show save success,Plug out the logger and Click OK and all the settings are finished.



9, Start Re-programme a new logger or **Exit** the software.